

# Golf Course Building Lots

## \$30,000

**For Sale or Trade**

Belmont Springs Park Estates

Just 6 lots left!

\$30,000 per lot or \$180,000 for all 6!

All are free & clear and ready to build on.

Water, power and phone in street.

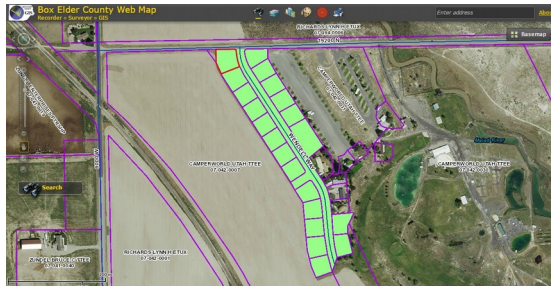
CCR's available for lots.

Located west of Camperworld RV resort and east of I-15 on Wendell Way.

Within walking distance of Belmont Springs Golf Course.

**Can SELL separately or TRADE 1-2 lots for newer RV.**

Resort living with views of Malad River, Wasatch Front Mountains and the valley.



## Contact

**Mike Weber**

Time Commercial RE

801-940-0776

Email: mineralbroker@yahoo.com

**Jimmy Reese**

Equity Real Estate

801-870-8456

Email: jtreese41@yahoo.com